



New Patient Coordinator  
Merritt Island

**Brenda Pacheco**  
Ext 6241103#

New Patient Coordinator  
Pineda and Palm Bay

**Milli Davis**  
Ext 6251215#

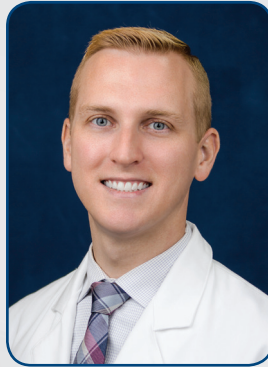
**Phone: 321-784-8211 • Fax: 321-336-7656**

## Our Physicians



**Ashish Udeshi, MD**

Practicing in Merritt Island,  
Pineda, and Palm Bay



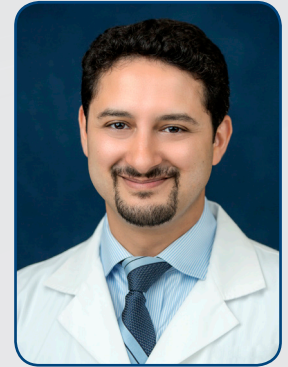
**Michael Esposito, MD**

Practicing in  
Palm Bay & Pineda



**Thaiduc Nguyen, DO**

Practicing in  
Merritt Island & Pineda



**S. Kamal Fetouh, MD**

Practicing in Merritt Island,  
Pineda, and Palm Bay

## Insurances We Accept

AARP Medicare Complete Wellmed PPO  
AARP Medicare Supplement  
(only 2nd to Medicare)  
AARP UHC Medicare Complete PPO  
AETNA PPO/EPO (Auth for Pro)  
Assurant Health  
Auto (1 week)  
AVMED (Auth Proc)  
BCBS Advantage  
BCBS Federal  
BCBS Medicare Advantage  
(Medicare Replacement)  
CHAMP VA

CIGNA  
CIGNA Great West  
Coventry PPO  
Evercare  
First Health PPO  
Florida Blue PPO (BCBS)  
Florida Hospital  
Galaxy Health  
GEHA  
Golden Rule  
Health First  
Humana Medicare Advantage  
LOPs (Letter of Protection)

Mail Handlers (Auth Pro)  
Medicare  
Molina Medicare (Auth Pro)  
Multi Plan  
Tricare For Life (Active Duty)  
Tricare South (Active Duty)  
Tricare Standard (Active Duty)  
United Healthcare Pro  
UHC Medicare Replacement PPO  
UHC Shared ServiceS (PPO)  
UMR  
Workers Comp (Regular And Settled)

## Insurance That Requires Authorization (Schedule Out 2 Weeks)

AARP Medicare Complete  
Wellmed HMO  
AARP UHC Medicare Complete HMO  
AETNA HMO  
CarePlus HMO  
Coventry Adventra  
Coventry HMO

Coventry Medicare HMO  
First Health HMO  
Freedom Medicare Advantage  
Humana Medicare Advantage (Gold Plus)  
Humana HMO  
Humana HMO Premier Open Access  
Humana Medicare Advantage (Gold Plus)

Secure Horizons  
Tricare Prime (Retired)  
United Health Care Compass HMO  
United Health Care Medicare Replacement  
Veterans Administration  
WellCare

### Merritt Island

595 N Courtenay Pkwy., Ste. 101  
Merritt Island, FL 32953  
Fax: 321-394-9425

### Pineda

5545 N Wickham Rd., Ste. 104  
Melbourne, FL 32940  
Fax: 321-394-9425

### Palm Bay

490 Centre Lake Drive NE Ste. 200B  
Palm Bay, FL 32907  
Fax: 321-394-9425